

# RAJA AMPAT 2025

June 20 - 29

14 Guests

10 Days



**SHERPA**

GLOBAL EXPEDITIONS



# SORONG - SORONG





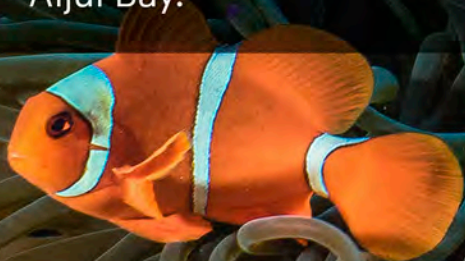
# THE TRIP

Breathtakingly beautiful is the best way to describe diving in Raja Ampat. Reefs are continuously teeming with activity as marine life thrive from the base of the sea floor all the way to the surface. Dive sites remain so pristine and packed with growth that a photographer is hard-pressed to find a spot to place a steadying finger.

Raja Ampat liveaboard trips are designed to explore the entire region. Each area of the National Park is sure to awe, from the colorful soft coral, reef sharks and mobula rays around the southern area of Misool, to the world-famous, current-rich sites of Cape Kri and Blue Magic in central Dampier Straits.

Pristine coral gardens and a viewpoint climb over the lagoon in Penemu, to the west.

Meanwhile, the north is also an excellent place to dive with mantas in Kawe and hunt critters in Aljui Bay.





# THE VESSEL

## Damai I

MY DAMAI I have been designed to offer a personal service dedicated to small groups. With an overall length of 40 meters (130 feet) and a beam of over 8 meters (26 feet) the vessel has 7 staterooms with a choice of single cabins, twins, doubles or two spacious master cabins. With sizes ranging from 18 sq meters / 194 sq feet for the single cabin to 40 sq meters / 430 sq feet for the master cabin, all are furnished with either queen- or king-sized beds, en-suite toilets, and showers.

The vessel has been designed with three large deck areas for relaxing in sun or shade and enjoying rejuvenating massage and spa treatments. Specifically designed for divers, the vessel offers large dive stations with individual rinse tanks, a camera room with separate workstations, and an integrated 110v and 220v charging station for each photographer.



Main Engine Mitsubishi 10M20-0A – 520 Hp

Gear Box – D300

Auxiliary Engine : 2 x Yanmar 4TNV98T

SILENT Generator 50 KVa (2016)

Yanmar 4TNV84T Open Generator 25 KVa (2017)

Compressor 1 unit Dive Compressor Poseidon PE200

1 unit Dive Compressor Alkin C.A.T.230

1 unit Nitrox Membrane System type Renner

Fuel Filters – Primary filter – Racor

Secondary filter – Racor

Pumps 2 unit Sea water pumps for toilet flush

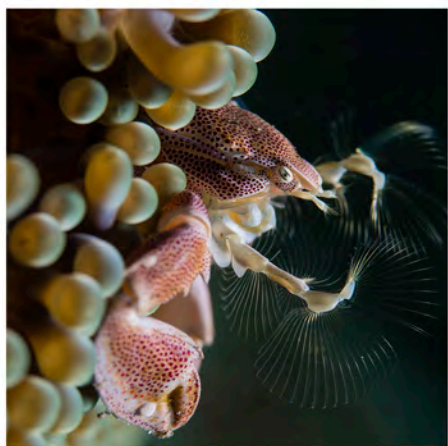
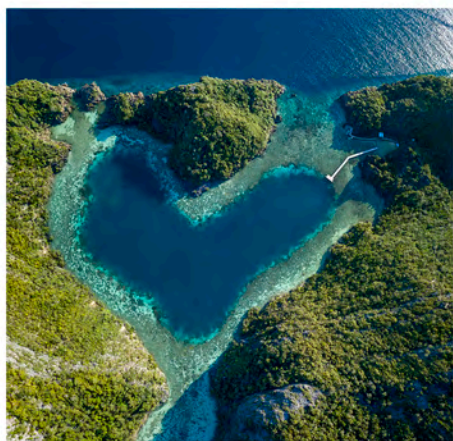
2 unit Fresh water pumps

3 unit GS pumps

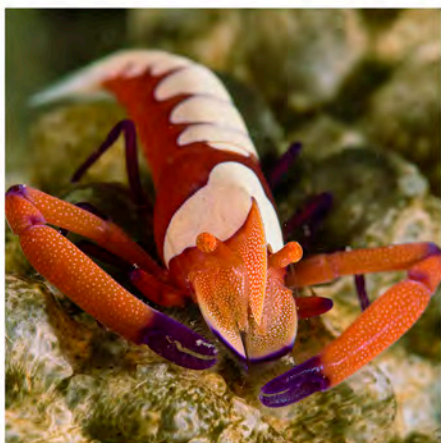
1 unit submersible pump for bilge

1 unit fuel transfer pump













# ITINERARY

- JUN 20**      Arrival in Yakarta  
Overnight in Yakarta
- JUN 21**      Flight to Sorong  
Embark Damai I
- JUN 21 - 28** Raja Ampat Liveaboard
- JUN 28**      Disembark in Sorong  
Flight to Yakarta
- JUN 29**      Flight out of Indonesia



# YOUR HOST

## SILVIA PEREZ DE LOS SANTOS

Born in Canarias and a true thalassophile, Silvia wore her first set of fins at 7 years old and never took them off. She started in the dive industry in 1999 at Alisub, her family-owned dive center in Alicante, and in 2008 her quest to explore the world took her to Indonesia, Thailand, Palau and the Philippines as Marketing & Operations Director for several world-class diving liveaboards. Silvia thrives through savoring new places, learning new cultures and blending with all sorts of cultures.





# YOUR HOST

## JORGE CERVERA HAUSER

Accomplished ocean explorer and underwater photographer. Jorge founded a major liveaboard operation where he also envisioned and designed one of the top liveaboard vessels in the world. Producer of the documentary México Pelágico, and the pioneer of open ocean safaris in Baja. A two-time speaker at TEDx, Jorge is passionate about everything wildlife, underwater photography, freediving, playing tennis, flying small aircrafts and riding motorcycles.





# RATES

Per Guest   USD	SPACES	NET RATE	PARK FEES	TOTAL
Master Cabin UD	2	\$5,500	\$450	\$5,950
Master Cabin LD	2	\$4,950	\$450	\$5,350
Standard Cabin	10	\$3,950	\$450	\$4,400

## Master Cabin UD (Upper Deck)

35sqm / Private Balcony / King-Size Bed / Daybed / Flat Screen Tv

## Master Cabin LD (Lower Deck)

40sqm / Indoor Balcony / King-Size Bed / Daybed / Flat Screen Tv

## Standard Cabin

18sqm / Double Bed + Twin Bed / Flat Screen Tv

# PAYMENT SCHEDULE

30%	At the time of booking
30%	By December 1st, 2024
50%	By April 1st, 2025



## **INCLUDED**

- Airport / hotel transfer ( vicinity of the Marina - 20km)
- Kayaks
- Non-alcoholic drinks (water, tea, coffee, soft drinks)
- Beers
- Glass of wine at dinner
- Visit local villages, beaches

## **EXCLUDED**

- International and regional flights
- In-transit hotels & meals
- Alcoholic beverages & espresso
- Gratuity for crew

## **COMPLIMENTARY FROM SHERPA GX**

- Dive rental gear
- Nitrox
- Laundry service
- Massages



## SHERPA GX DESTINATIONS

- Africa
- Antarctica
- North Pole
- Patagonia
- Pantanal
- Mongolia
- Alaska
- Indonesia
- Cocos
- Galapagos
- Baja
- Socorro
- Norway
- Iceland